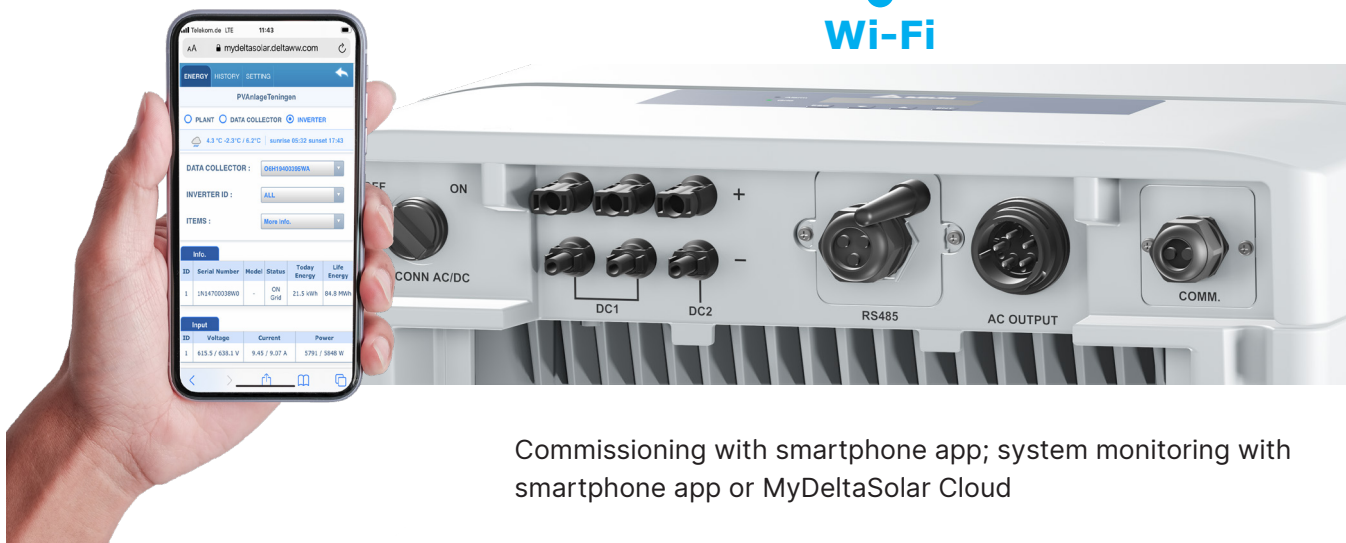




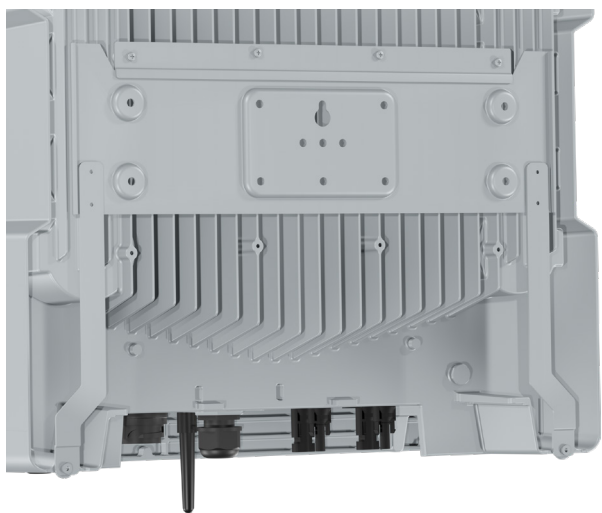
Solar inverters M6A / M8A / M10A

Highly efficient three-phase inverters with display and Wi-Fi — the perfect choice for private and small-scale commercial PV systems

Highlights



Commissioning with smartphone app; system monitoring with smartphone app or MyDeltaSolar Cloud



A mounting plate for wall mounting is included in the scope of supply. Due to its low weight, the unit can be lifted and moved by a single person.



The inverter can be operated easily using the display. All statistics and information on the current operating status can also be accessed here.

- Aluminium housing for long-lasting protection against moisture and corrosion
- Wide input voltage range
- Suitable for indoor and outdoor use (IP65)
- Compact and lightweight for easy installation
- Low noise emission
- All connectors included in the scope of delivery

Technical Data

Input (DC)	M6A	M8A	M10A
Maximum power ¹⁾	6.6 kW ²⁾	8.8 kW ³⁾	11 kW ⁴⁾
Operating voltage range	200 to 1000 V _{DC}		
MPP voltage range	200 to 1000 V _{DC}		
MPP voltage range with max. power at symmetrical load	315 to 800 V _{DC}	415 to 800 V _{DC}	
Switch-on voltage	250 V _{DC}		
Maximum current (per MPP tracker/total)	10 A/20 A		DC1: 15 A, DC2: 10 A/25 A
Maximum number of MPP trackers	Parallel inputs: 1; separate inputs: 2		
Input load	Symmetrical and asymmetrical (60%/40% to 40%/60%)		Symmetrical and asymmetrical (60%/40%)

Output (AC)	M6A	M8A	M10A
Maximum apparent power ⁵⁾	6.3 kVA	8.4 kVA	10.5 kVA
Nominal apparent power ⁵⁾	6.0 kVA	8.0 kVA	10.0 kVA
Voltage range ⁶⁾	230 V _{AC} ± 20%/400 ± 20%; 3 phases + PE or 3 phases + N + PE		
Nominal current per phase	8.7 A	11.6 A	14.5 A
Frequency range ⁶⁾	50/60 Hz ± 5 Hz		
Adjustment range of power factor	0.8 cap ... 0.8 ind		
Total harmonic distortion (THD)	< 3% at nominal apparent power		

General Specifications	M6A	M8A	M10A
Delta model name	RPI M6A	RPI M8A	RPI M10A
Delta part number	RPI602FA0E1000	RPI802FA0E1000	RPI103FA0E1000
Peak efficiency	98.3%	98.3%	98.3%
Efficiency EU	97.6%	97.6%	98.0%
Operating temperature range	-25 to +60°C		
Temperature range without power derating	-25 to +40°C		
Storage temperature range	-25 to +60°C		
Relative humidity	0 to 100%, non-condensing		
Maximum operating altitude	2000 m (above sea level)		
Standard warranty	5 years (warranty extension available upon request)		

Mechanical design	M6A	M8A	M10A
Dimensions (H x W x D)	445 × 510 × 177 mm		
Weight	25 kg		26 kg
Cooling	Natural convection, without fans		
Disconnectors	1x mechanical AC/DC disconnecter		
Connection type AC side	1 AC plug Amphenol C16-3		
Connection type DC side			
Type	Multi-contact MC4		
Q'ty	2 pairs		3 pairs

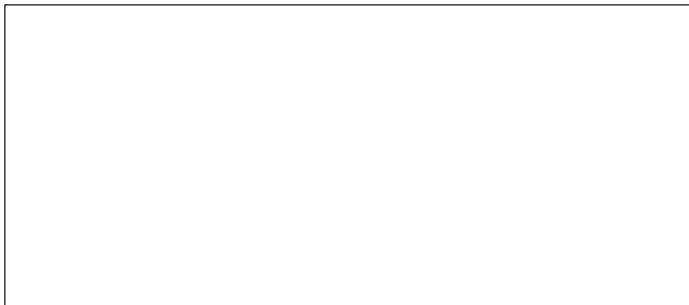
Communication	M6A	M8A	M10A
Communication interfaces	2 x RS485, 1 x dry contact, 1 x external power-off, 6 x digital inputs, Wi-Fi		
Display	Monochrome 4-line LCD		
Data visualization	DeltaSolar app, MyDeltaSolar Cloud		
Display of operating status	Display, 3 LEDs		

Technical Data

Safety/ Standards	M6A	M8A	M10A
Protection class	IP65		
Safety class	I		
Configurable trip parameters	Yes		
Insulation monitoring	Yes		
Overload behavior	Current limitation, power limitation		
Anti-islanding protection/ Grid regulation	VDE 0126-1-1; VDE-AR-N 4105; EN 50438:2007; Synergrid C10/C11 06/2012; UTE C 15-712-1; VDE 0126-1-1/A1; French islands 50 Hz		
EMC	EN 61000-6-2; EN 61000-6-3; EN 61000-3-2; EN 61000-3-3		
Safety	IEC 62109-1/-2; CE compliance		

- 1) When operating with symmetrical DC inputs (50%/50%)
- 2) Maximum 4.25 kW per DC input with asymmetrical load (40%/60%)
- 3) Maximum 5.65 kW per DC input with asymmetrical load (40%/60%)
- 4) Maximum 7.0 kW for input DC1 and 5.4 kW for input DC2
- 5) Cos Phi = 1 (VA = W)
- 6) AC voltage and frequency range are programmed based on the respective country regulations.

Contact



Email: solarsales.emea@deltaww.com

Telephone: +49 7641 455 547 (phone number in Germany)