



## Industrial Automation Headquarters

**Delta Electronics, Inc.**  
Taoyuan Technology Center  
No. 18, Xinglong Rd., Taoyuan District,  
Taoyuan City 33068, Taiwan  
TEL: 886-3-362-6301 / FAX: 886-3-371-6301

## Asia

**Delta Electronics (Shanghai) Co., Ltd.**  
No. 182 Minyu Rd., Pudong Shanghai, P.R.C.  
Post code : 201209  
TEL: 86-21-6872-3988 / FAX: 86-21-6872-3996  
Customer Service: 400-820-9595

## Delta Electronics (Japan), Inc.

Tokyo Office  
Industrial Automation Sales Department  
2-1-14 Shibadai-mon, Minato-ku  
Tokyo, Japan 105-0012  
TEL: 81-3-5733-1155 / FAX: 81-3-5733-1255

## Delta Electronics (Korea), Inc.

Seoul Office  
1511, 219, Gasan Digital 1-Ro., Geumcheon-gu,  
Seoul, 08501 South Korea  
TEL: 82-2-515-5305 / FAX: 82-2-515-5302

## Delta Energy Systems (Singapore) Pte Ltd.

4 Kaki Bukit Avenue 1, #05-04, Singapore 417939  
TEL: 65-6747-5155 / FAX: 65-6744-9228

## Delta Electronics (India) Pvt. Ltd.

Plot No.43, Sector 35, HSIIDC Gurgaon,  
PIN 122001, Haryana, India  
TEL: 91-124-4874900 / FAX : 91-124-4874945

## Delta Electronics (Thailand) PCL.

909 Soi 9, Moo 4, Bangpoo Industrial Estate (E.P.Z.),  
Pattana 1 Rd., T.Phraksa, A.Muang,  
Samutprakarn 10280, Thailand  
TEL: 66-2709-2800 / FAX : 662-709-2827

## Delta Energy Systems (Australia) Pty Ltd.

Unit 20-21/45 Normanby Rd., Notting Hill Vic 3168, Australia  
TEL: 61-3-9543-3720

## Americas

### Delta Electronics (Americas) Ltd.

Raleigh Office  
P.O. Box 12173, 5101 Davis Drive,  
Research Triangle Park, NC 27709, U.S.A.  
TEL: 1-919-767-3813 / FAX: 1-919-767-3969

### Delta Greentech (Brasil) S/A

São Paulo Office  
Rua Itapeva, 26 – 3° Andar - Bela Vista  
CEP: 01332-000 – São Paulo – SP - Brasil  
TEL: 55-11-3530-8642 / 55-11-3530-8640

### Delta Electronics International Mexico S.A. de C.V.

Mexico Office  
Vía Dr. Gustavo Baz No. 2160, Colonia La Loma,  
54060 Tlalne-pantla Estado de Mexico  
TEL: 52-55-2628-3015 #3050/3052

## EMEA

### Headquarters: Delta Electronics (Netherlands) B.V.

Sales: Sales.IA.EMEA@deltaww.com  
Marketing: Marketing.IA.EMEA@deltaww.com  
Technical Support: iatechnicalsupport@deltaww.com  
Customer Support: Customer-Support@deltaww.com  
Service: Service.IA.emea@deltaww.com  
TEL: +31(0)40 800 3800

### BENELUX: Delta Electronics (Netherlands) B.V.

De Witbogt 20, 5652 AG Eindhoven, The Netherlands  
Mail: Sales.IA.Benelux@deltaww.com  
TEL: +31(0)40 800 3800

### DACH: Delta Electronics (Netherlands) B.V.

Coesterweg 45, D-59494 Soest, Germany  
Mail: Sales.IA.DACH@deltaww.com  
TEL: +49(0)2921 987 0

### France: Delta Electronics (France) S.A.

ZI du bois Challand 2, 15 rue des Pyrénées,  
Lisses, 91090 Evry Cedex, France  
Mail: Sales.IA.FR@deltaww.com  
TEL: +33(0)1 69 77 82 60

### Iberia: Delta Electronics Solutions (Spain) S.L.U

Ctra. De Villaverde a Vallecas, 265 1º Dcha Ed.  
Hormigueras – P.I. de Vallecas 28031 Madrid  
TEL: +34(0)91 223 74 20  
C/Llull, 321-329 (Edifici CINC) | 22@Barcelona, 08019 Barcelona  
Mail: Sales.IA.Iberia@deltaww.com  
TEL: +34 93 303 00 60

### Italy: Delta Electronics (Italy) S.r.l.

Ufficio di Milano Via Senigallia 18/2 20161 Milano (MI)  
Piazza Grazioli 18 00186 Roma Italy  
Mail: Sales.IA.italy@deltaww.com  
TEL: +39 02 64672538

### Russia: Delta Energy System LLC

Vereyskaya Plaza II, office 112 Vereyskaya str.  
17 121357 Moscow Russia  
Mail: Sales.IA.RU@deltaww.com  
TEL: +7 495 644 3240

### Turkey: Delta Greentech Elektronik San. Ltd. Sti. (Turkey)

Şerifali Mah. Hendem Cad. Kule Sok. No:16-A  
34775 Ümraniye – Istanbul  
Mail: Sales.IA.Turkey@deltaww.com  
TEL: + 90 216 499 9910

### GCC: Delta Energy Systems AG (Dubai BR)

P.O. Box 185668, Gate 7, 3rd Floor, Hamarain Centre  
Dubai, United Arab Emirates  
Mail: Sales.IA.MEA@deltaww.com  
TEL: +971(0)4 2690148

### Egypt + North Africa: Delta Electronics

511 Cairo Business Plaza, North 90 street,  
New Cairo, Cairo, Egypt  
Mail: Sales.IA.MEA@deltaww.com

# DOP-100 Series Transition Manual



## DOP-100 Series Transition Manual

[www.deltaww.com](http://www.deltaww.com)



# Preface

---

Thank you for purchasing this product. This manual provides information about the conversion from the DOP-B series HMI to the DOP-100 series HMI.

This manual includes:

- Replacement model selections
- Project conversion steps
- Software interface conversion and function differences
- Print function
- File encryption function
- COM port conversion
- Driver update

Product features:

Delta's all new advanced DOP-100 series HMI adopts the Cortex-A8 high-performance processor with high-brightness and high-contrast color display, as well as providing user-friendly operation interfaces. In response to the increasing popularity of cloud applications and smart manufacturing, the DOP-100 series HMI also supports network functions, such as FTP, e-mail, VNC remote monitoring, NTP network timing, etc.

How to use this manual:

When transitioning from DOP-B to DOP-100, you can use this manual as a reference for model selection, setup, and product usage. Please first read Chapter 1 before you start converting to the DOP-100 series HMI. You can also use the Table of Contents to quickly locate the information you need.

Delta technical services:

Please consult your Delta equipment distributor or Delta Customer Service Center if you encounter any problems.

(This page is intentionally left blank.)

# Table of Contents

---

## 1

### Replacement Model Selection

- 1.1 Corresponding replacement models ..... 1-2
- 1.2 Project conversion ..... 1-3

## 2

### Software Interface Conversion

- 2.1 Button ..... 2-2
  - 2.1.1 Button color ..... 2-2
  - 2.1.2 Previous page ..... 2-4
- 2.2 Security level and password ..... 2-5
- 2.3 Multimedia ..... 2-6
- 2.4 Multi-language input ..... 2-8
- 2.5 Printer ..... 2-9
- 2.6 File encryption ..... 2-11
- 2.7 Conversion of COM port ..... 2-13
- 2.8 Update ICD OpenGL driver ..... 2-17

(This page is intentionally left blank.)

# Replacement Model Selection

---

# 1

This chapter describes the steps to convert from the DOP-B series models to the DOP-100 series models.



1.1	Corresponding replacement models.....	1-2
1.2	Project conversion .....	1-3

1

### 1.1 Corresponding replacement models

The DOP-100 series models support conversion from the DOP-B series models, as shown in the following table. When you use a DOP-100 series model to open a project file of the corresponding DOP-B series model, the software automatically converts it to the DOP-100 series model project. For example, if you use DOPSoft 4.0 to open a project file edited on DOP-B03S210, it automatically converts the project file to that of the corresponding model DOP-103BQ.

Compatible models		Partially compatible models		Incompatible models*
DOP-B series	DOP-100 series	DOP-B series	DOP-100 series	DOP-B series
DOP-B03S210 DOP-B03S211	DOP-103BQ	DOP-B07S415* DOP-B07S411K DOP-B07S401K DOP-B07PS415	DOP-107CV	DOP-B05S111
DOP-B03E211	DOP-103WQ	DOP-B07E415*	DOP-107EV	DOP-B08S515 DOP-B08E515
DOP-B07SS411 DOP-B07S410	DOP-107BV	DOP-B07S515 DOP-B07PS515	DOP-107EG	DOP-B10S615 DOP-B10E615 DOP-B10S511 DOP-B10E515
DOP-B07S411	DOP-107CV	DOP-B10S411	DOP-110CS	*Compatible models will be released in mid-2019.
DOP-B07E411	DOP-107EV	*The replacement model DOP-107IV for DOP-B07S415 and DOP-B07E415 is coming soon.		
DOP-B07E515	DOP-107EG			

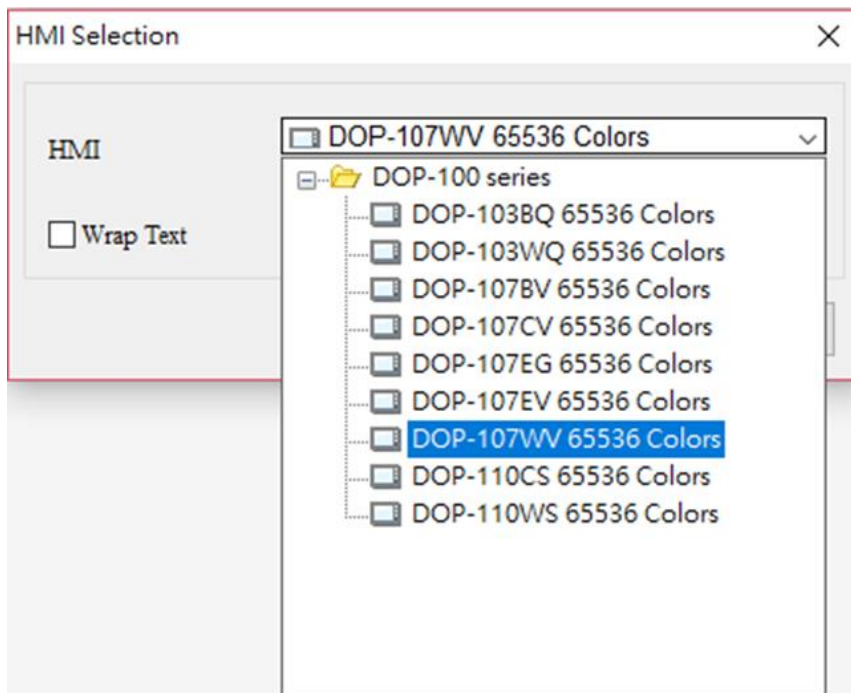
Compatible models indicate that the DOP-100 series models are the same as the DOP-B series models in terms of the mounting dimensions and number of COM ports. Partially compatible models indicate that the mounting dimensions are the same, but the number of COM ports is different<sup>\*1</sup>, so you need to note the number of COM ports when selecting the suitable model for transition. Incompatible models indicate that there is currently no corresponding model for transition, and the compatible models will be released in Q2 2019.

Note:

1. In the partially compatible models, the DOP-B series has three physical COM ports, while the DOP-100 series has two physical COM ports. The replacement model DOP-107IV (coming soon) for DOP-B07S415 and DOP-B07E415 has three physical COM ports.

## 1.2 Project conversion

When you use DOPSoft 4.0 to open a DOP-B project file, the software automatically determines if there is a corresponding compatible model or partially compatible model. If there is, the project is automatically converted and opened on the DOP-100 series model; otherwise, a pop-up window prompts you to select a replacing DOP-100 series model. For example, if you use DOPSoft 4.0 to open a DOP-B03S210 project file, the software automatically converts and opens it as a DOP-103BQ project file. However, if you open a DOP-B05S111 project file, a window pops up for you to select the alternative DOP-100 series model (i.e. DOP-103BQ or DOP-107CV) because there is currently no corresponding model for transition.



1



(This page is intentionally left blank.)

1

# Software Interface Conversion

# 2

This chapter introduces the differences between the operation interfaces and functions for the DOP-B series and the DOP-100 series.

---

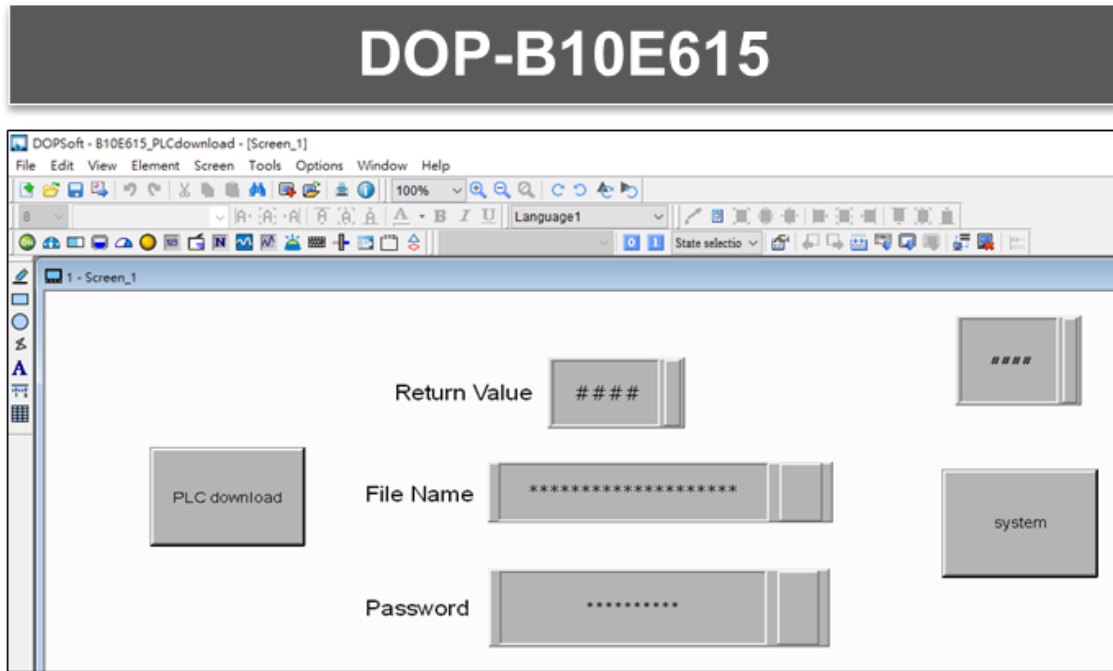
2.1	Button .....	2-2
2.1.1	Button color .....	2-2
2.1.2	Previous page .....	2-4
2.2	Security level and password .....	2-5
2.3	Multimedia .....	2-6
2.4	Multi-language input .....	2-8
2.5	Printer .....	2-9
2.6	File encryption .....	2-11
2.7	Conversion of COM port .....	2-13
2.8	Update ICD OpenGL driver .....	2-17

## 2.1 Button

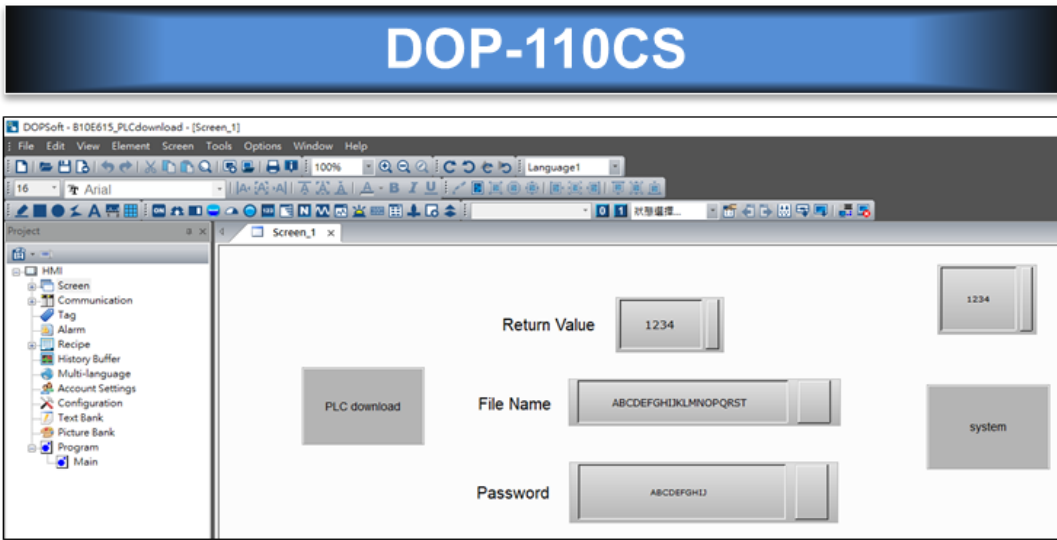
### 2.1.1 Button color

- Button fill style of the DOP-B series is fixed.

2

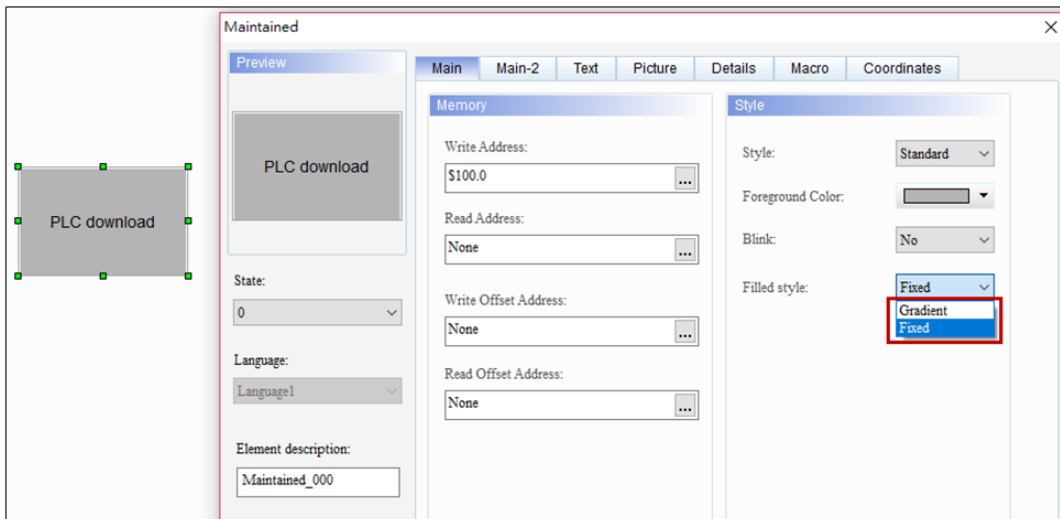


- You can select [Fixed] or [Gradient] for the button fill style on the DOP-100 series.
- Buttons are displayed in fixed colors when a DOP-B project is converted to a DOP-100 project.



2

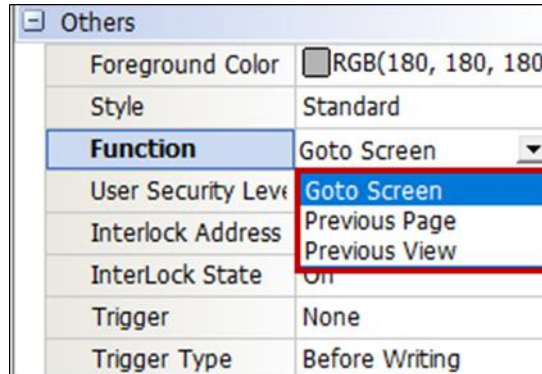
- You can then change the fill style of the button to gradient.



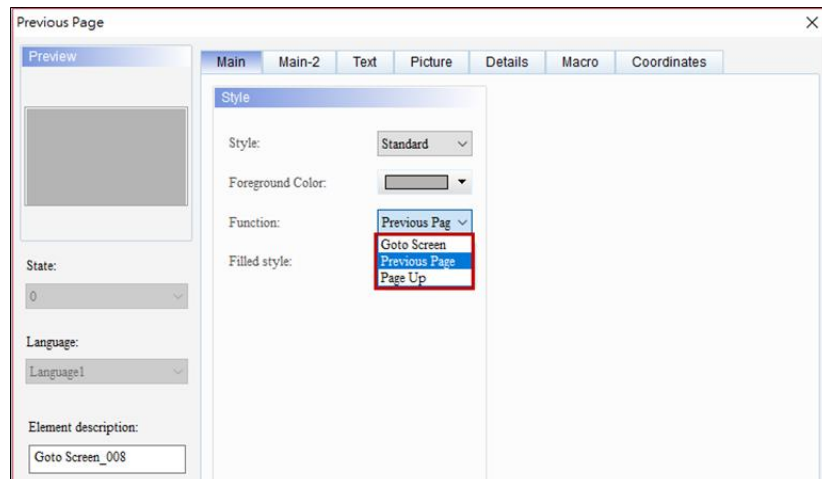
2

### 2.1.2 Previous page

- DOP-B has two separate buttons for [Goto Screen] and [Previous Page].
- For DOP-B, you can only change the element function on the property window.

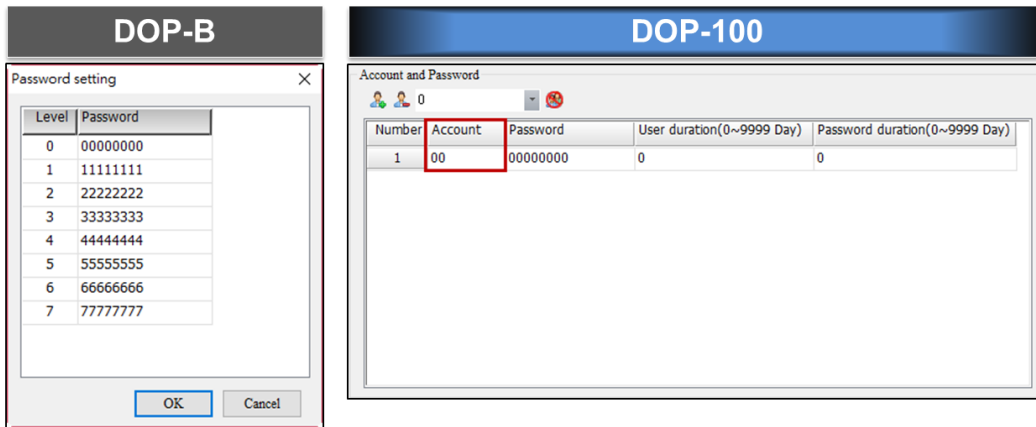


- DOP-100 integrates [Goto Screen] and [Previous Page] into one button as [Goto Screen].
- For DOP-100, you can change the element function on the property window, as well as double-clicking the button element to go to the property setting window.

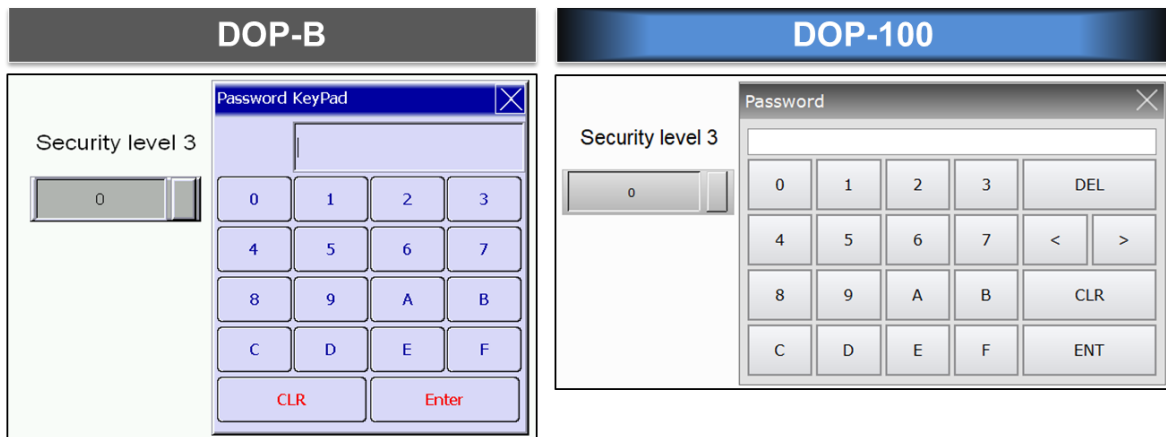



## 2.2 Security level and password

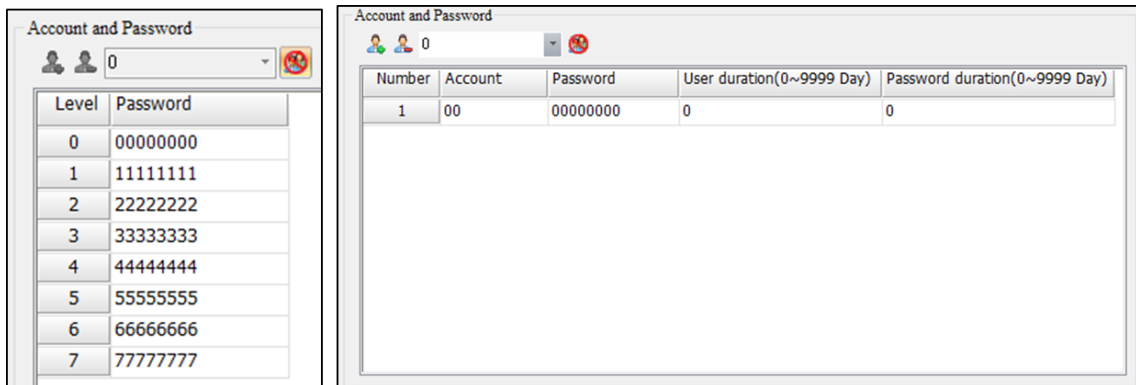
- For DOP-B, you do not need to enter a user account for the Security Level and Password.
- For DOP-100, you need to enter a user account for the Security Level and Password.



- When you open a DOP-B project with DOP-100, the Security Level and Password is the same, meaning you only need to enter the password without a user account to log in.



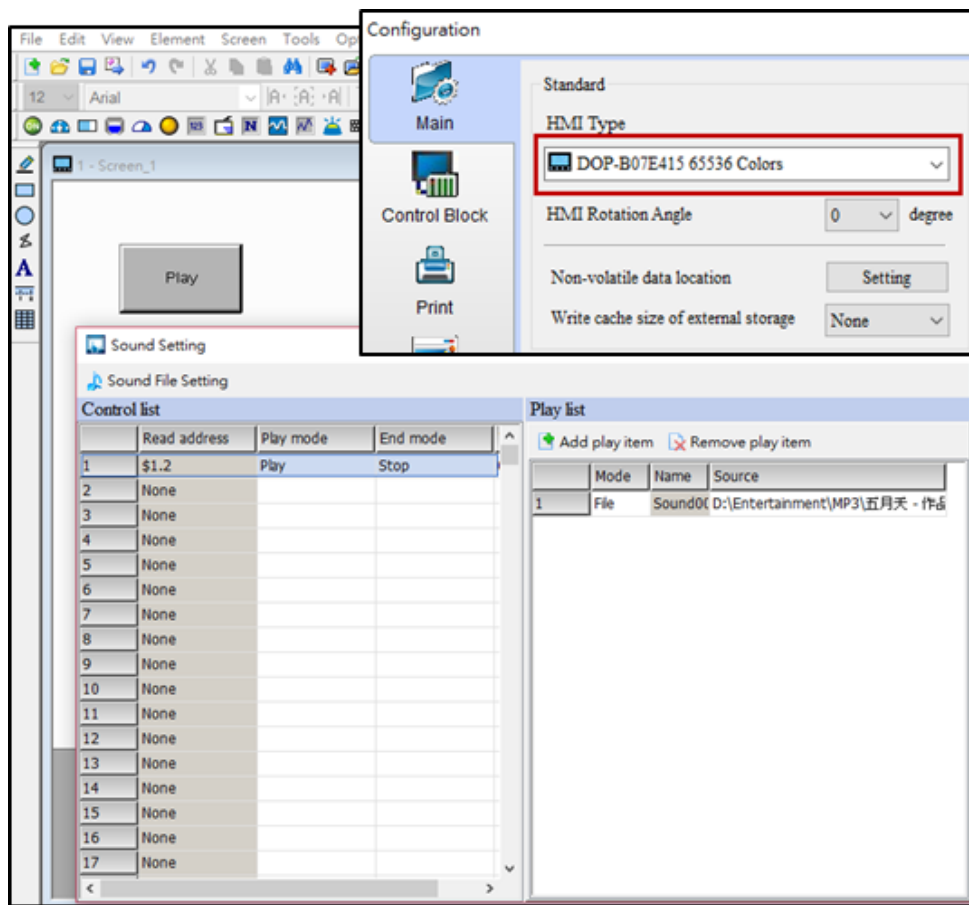
- If you prefer to switch to the DOP-100 login mode, click  to change the Security Level and Password login setting.

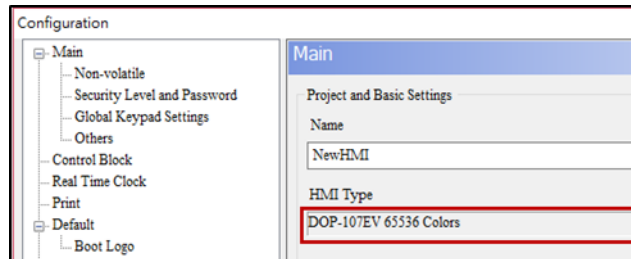
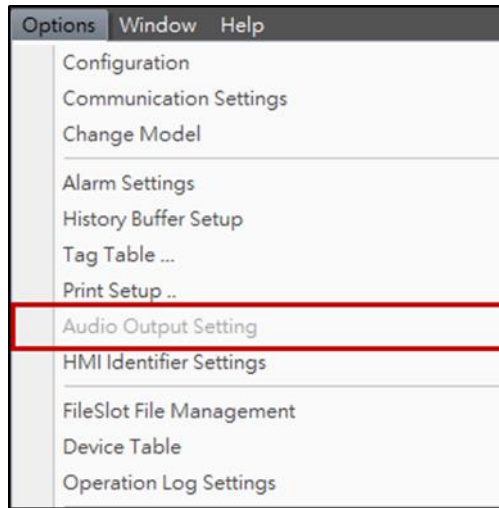


2

### 2.3 Multimedia

- DOP-B07E415, DOP-B07E515, DOP-B08E515, DOP-B10E515, and DOP-B10E615 models have the audio output function.
- Only DOP-107EG and DOP-110ES of the DOP-100 replacement models have the audio output function.
- If you open a DOP-B project with audio function on a DOP-100 replacement model that does not support this function, the interface for the audio output function is automatically removed and the [Audio Output Setting] in the [Options] drop-down list becomes unavailable.
- The following figures show the difference when you open a DOP-B07E415 project on DOP-107EV.



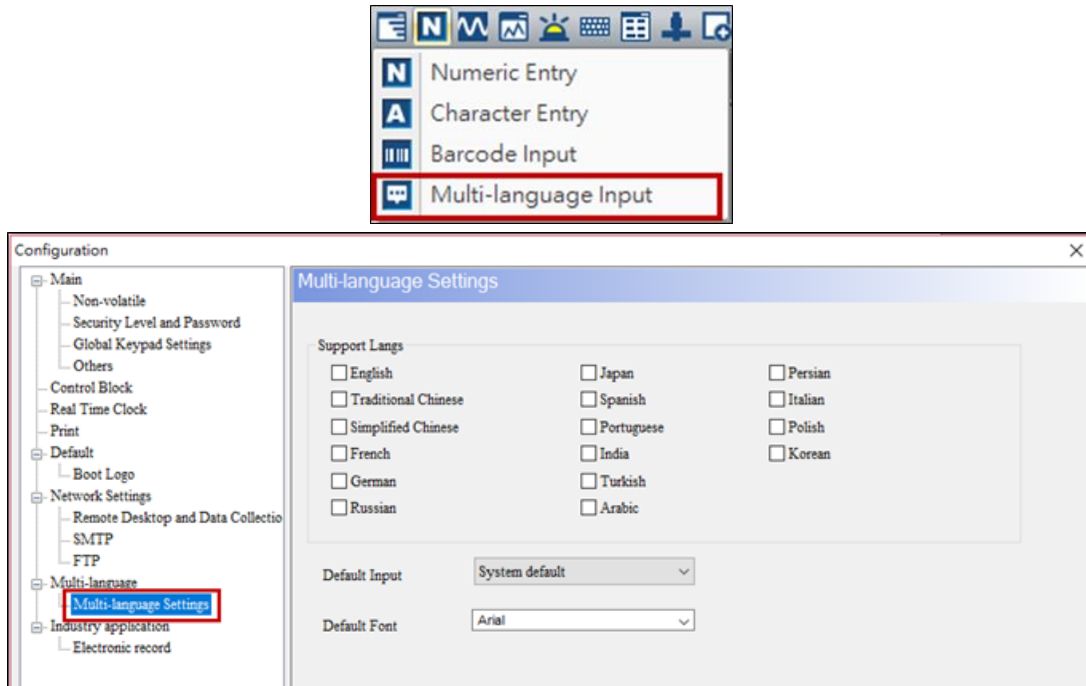




# 2

## 2.4 Multi-language input

- The Multi-language Input function is only available on the following models: DOP-103WQ, DOP-107WV, DOP-110WS, DOP-112WX, DOP-112MX, DOP-115WX, and DOP-115MX.
- You can see the Multi-language Input option on the interface for the models that support this function:

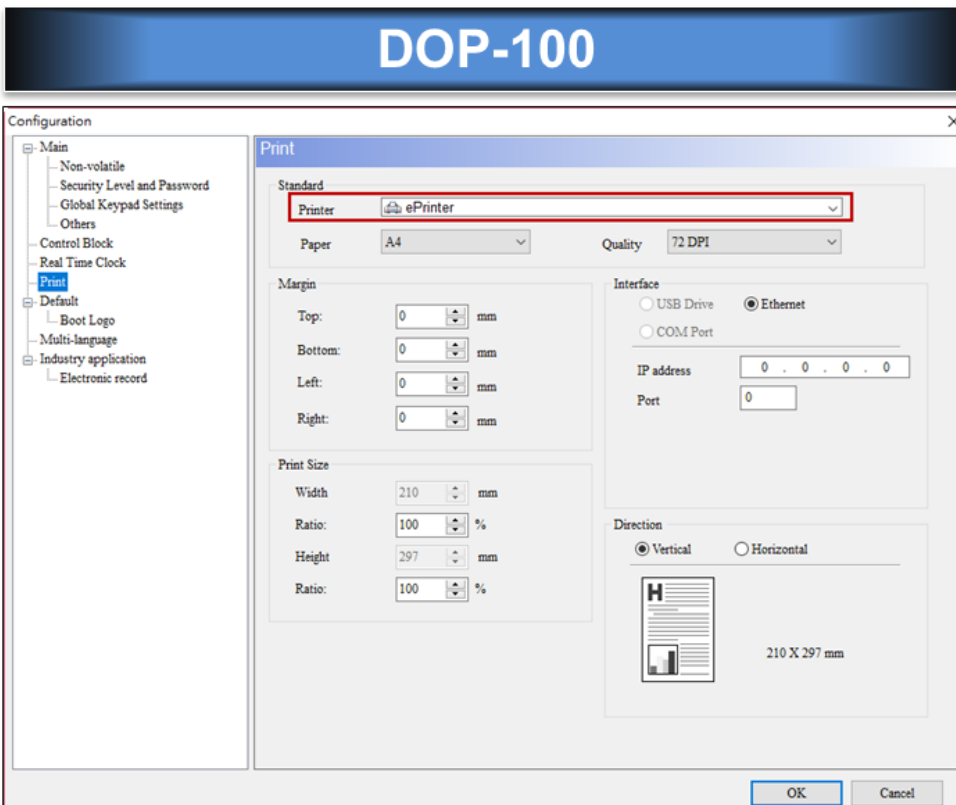
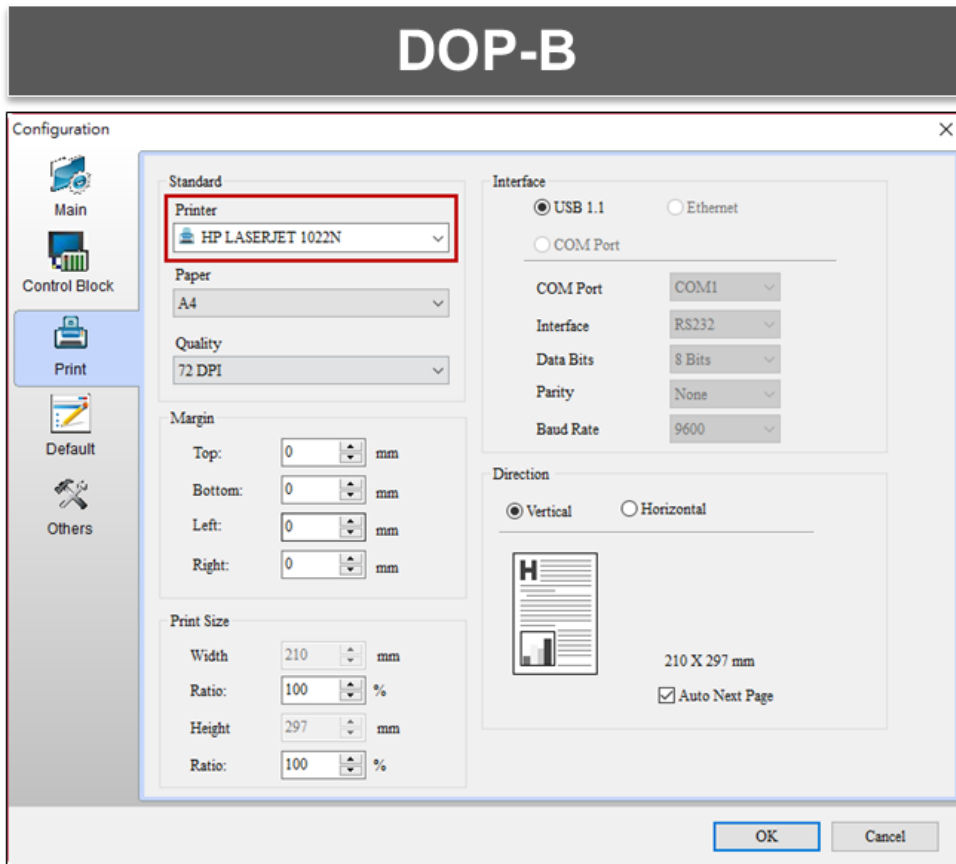


- Currently, DOP-103WQ is the replacement model for the DOP-B series that supports the Multi-language Input function.

## 2.5 Printer

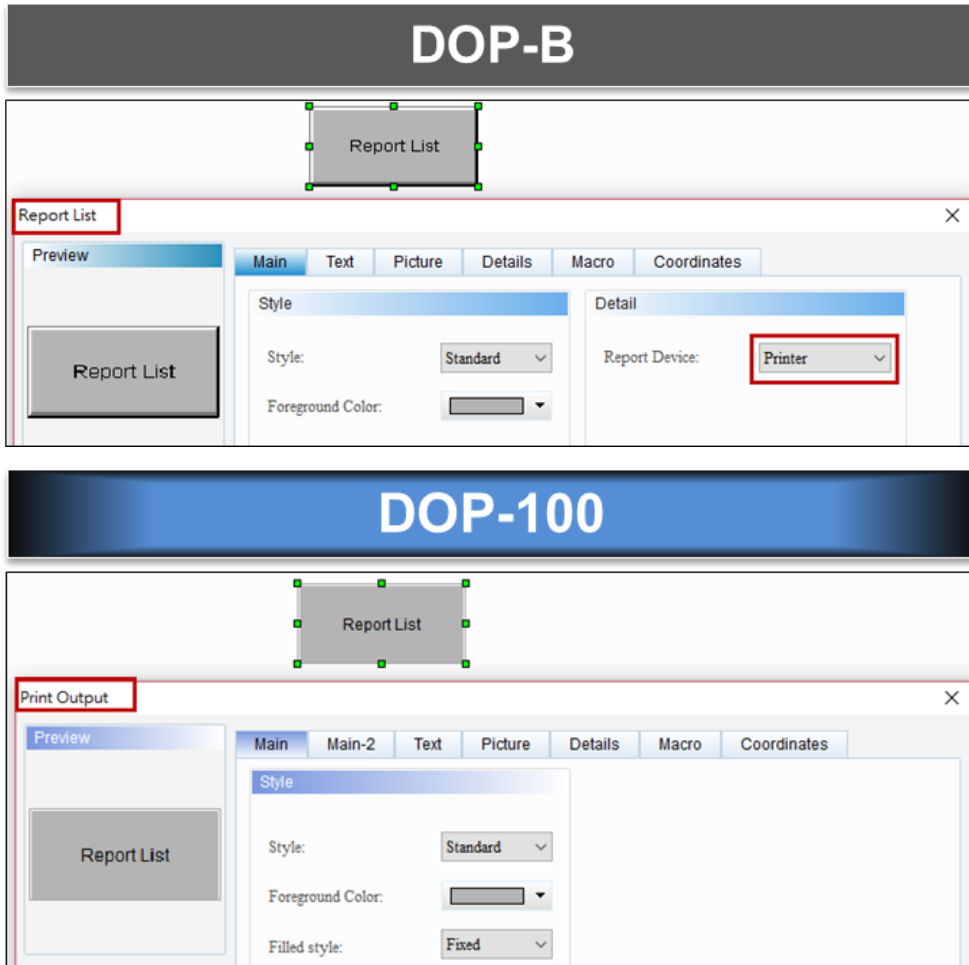
- The specified printer of the DOP-B project changes to ePrinter by default when converted to a DOP-100 project.

2



# 2

- The Report List button of the DOP-B project changes to the Print Output button when converted to a DOP-100 project.



## 2.6 File encryption

Encrypt files from the HMI end:

- You can encrypt files from the HMI end with DOP-B.
- You cannot encrypt files from the HMI end with DOP-100.

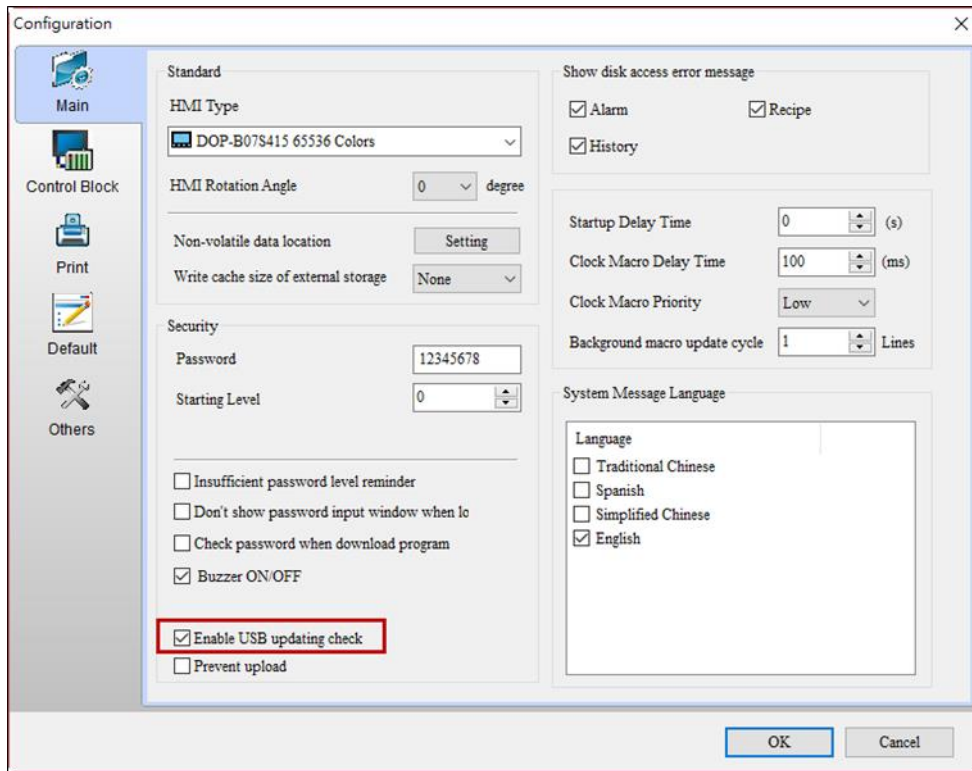
2



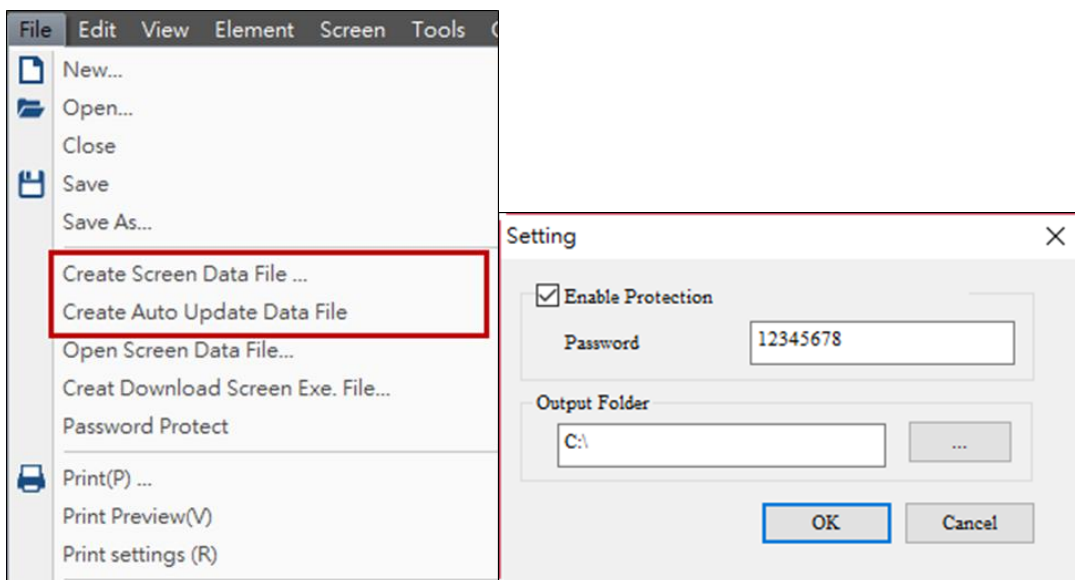
2

Encrypt files from the computer end:

- DOP-B uses [Enable USB updating check] to encrypt files.



- DOP-100 uses [Create Screen Data File...] and [Create Auto Update Data File] to encrypt files.



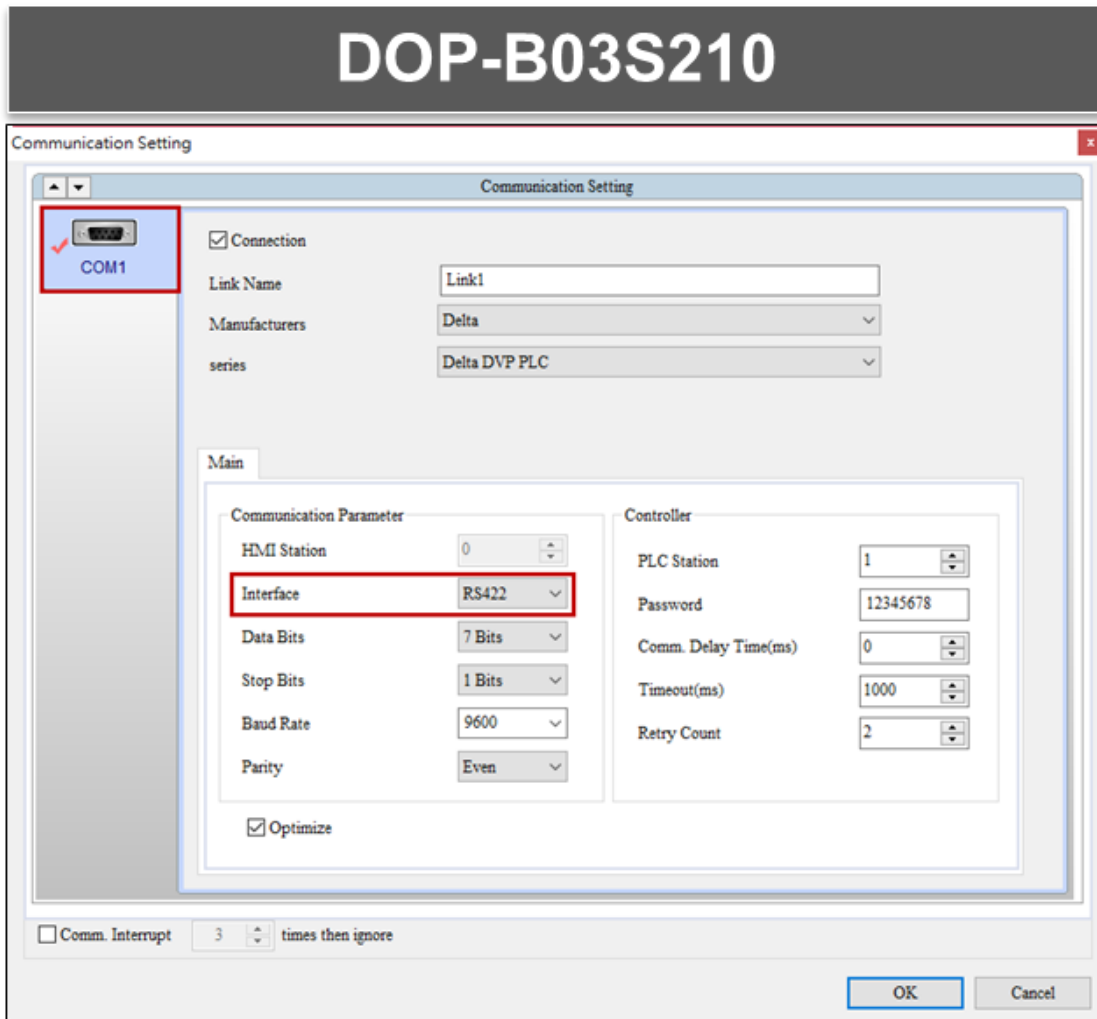
## 2.7 Conversion of COM port

Transitioning from DOP-B to DOP-100 does not cause changes to the COM port. Only the communication interface switches from COM1 to COM2 when converting from DOP-B03S210 and DOP-B07S410.

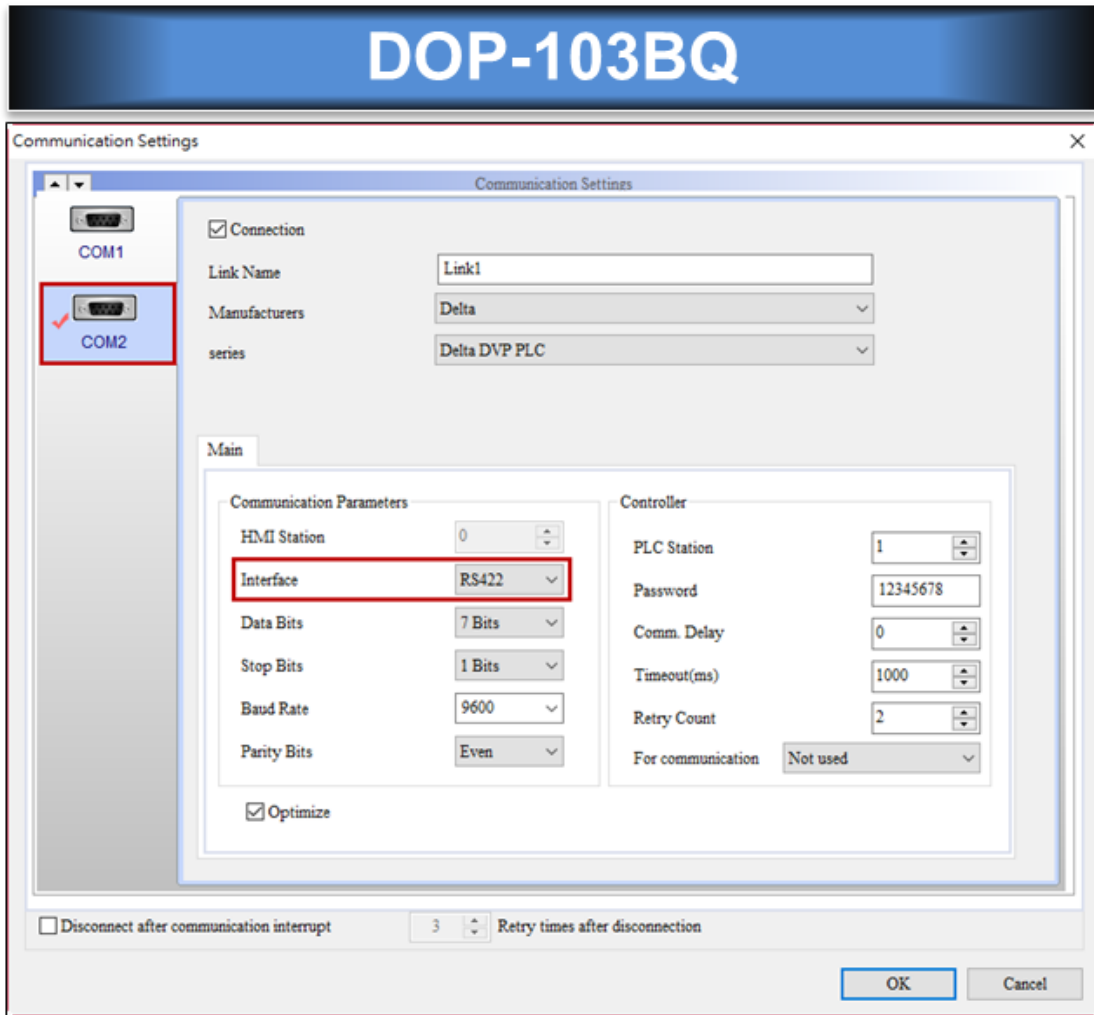
### ■ DOP-B03S210

When you set COM1 of DOP-B03S210 as RS422, it automatically converts to COM2 as RS422 on DOP-103BQ.

2



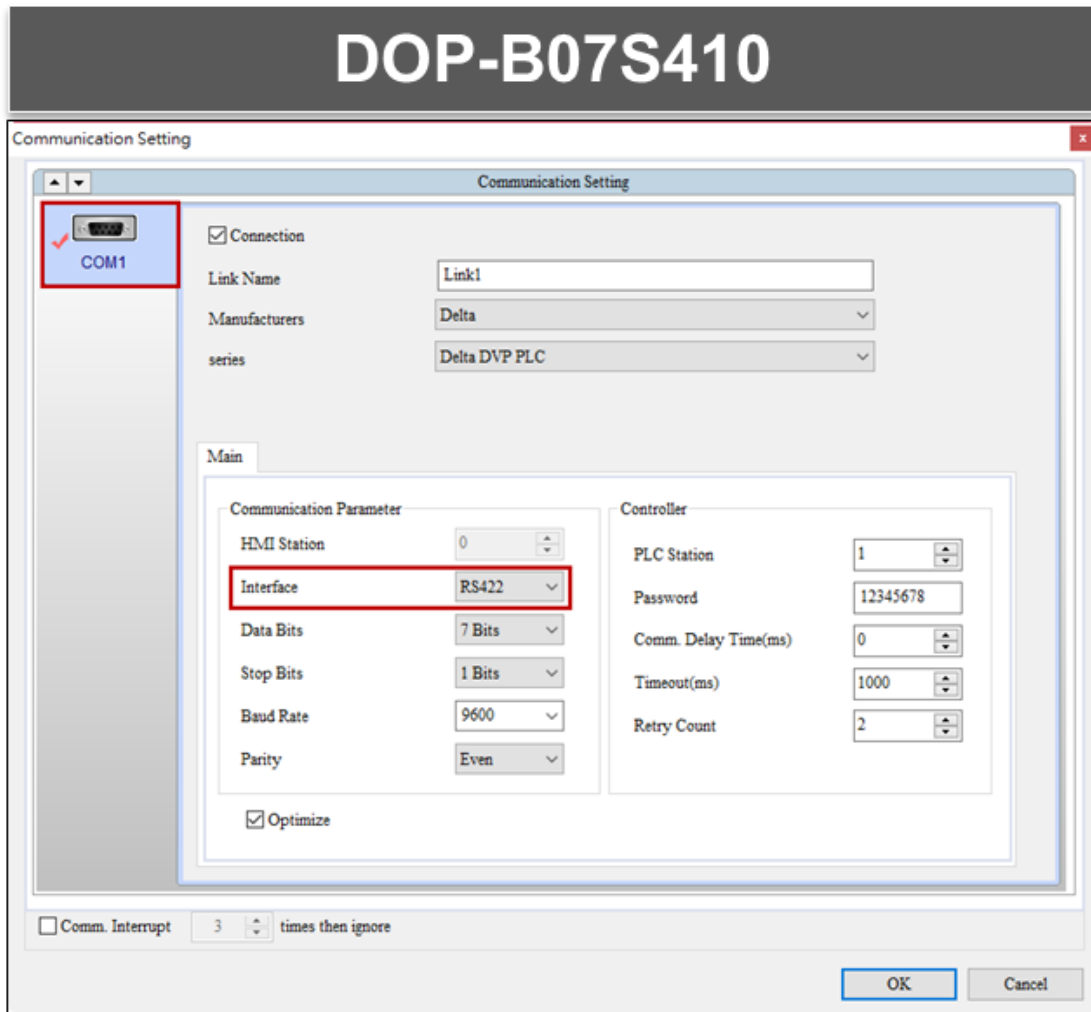
2



■ **DOP-B07S410**

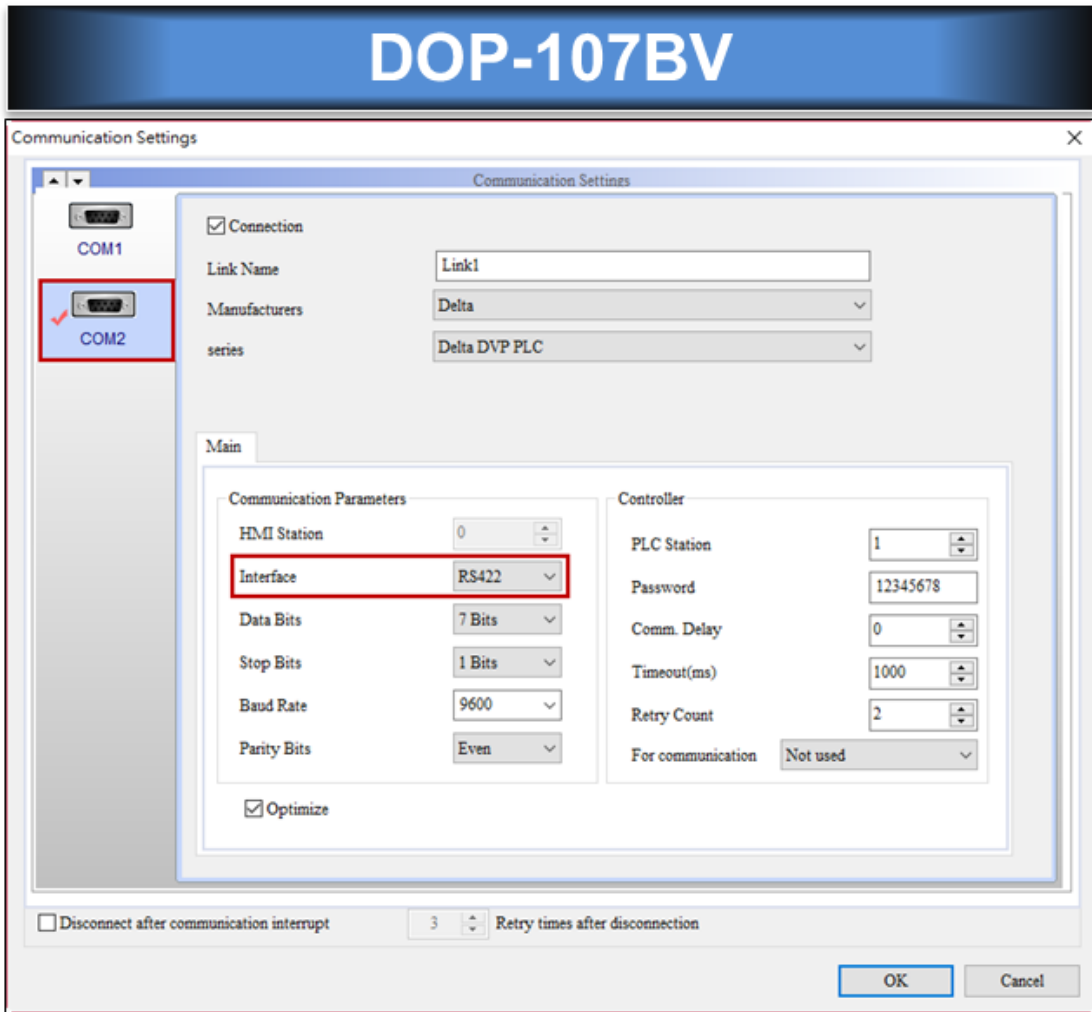
When you set COM1 of DOP-B07S410 as RS422, it automatically converts to COM2 as RS422 on DOP-107BV.

2



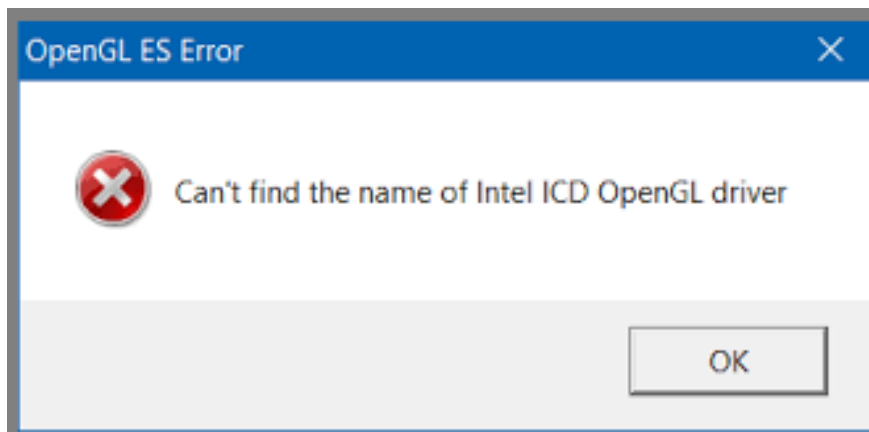


2



## 2.8 Update ICD OpenGL driver

After compiling the DOP-100 screen, an OpenGL driver error message pops up.



Go to the following link to download the latest driver:

<https://downloadcenter.intel.com/download/27484/Graphics-Intel-Graphics-Driver-for-Windows-15-65-?product=80939>

# 2

(This page is intentionally left blank.)

2